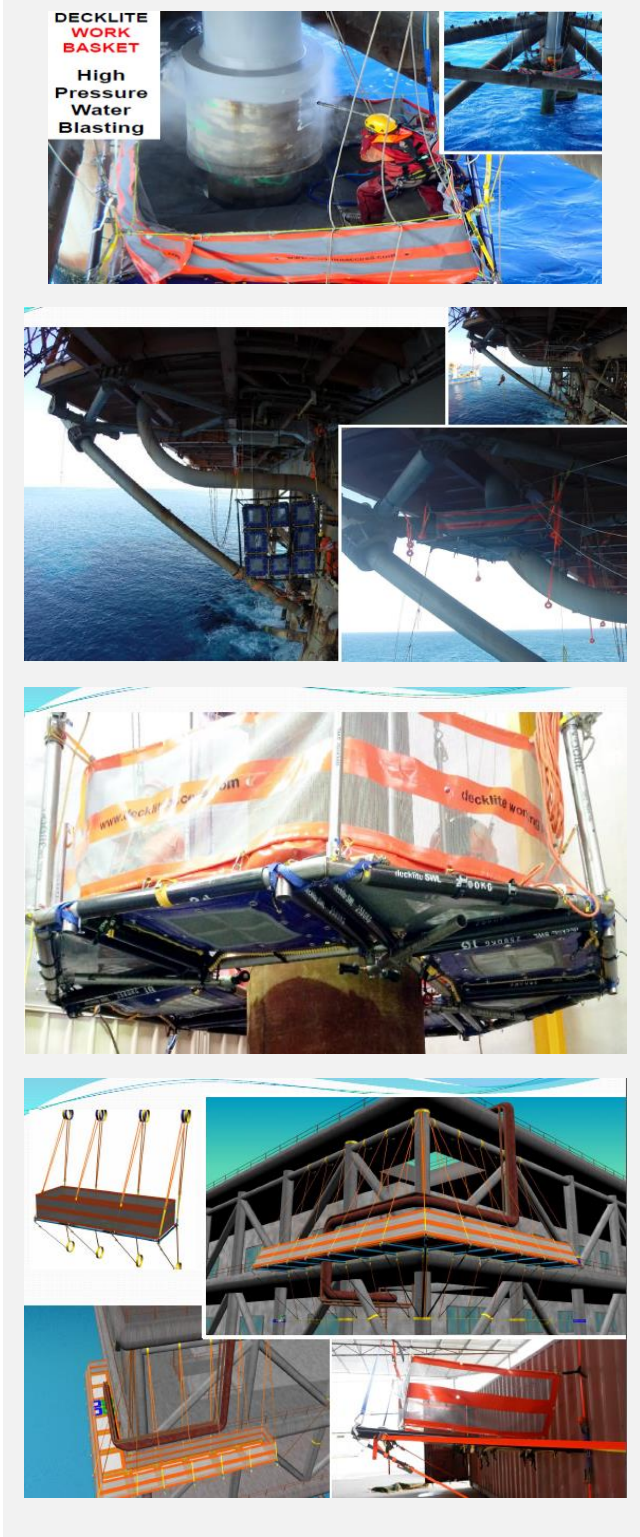


DECKLITE™ ACCESS

Coral 2.0 TRT Tech #5



**Structurally engineered
cost-effective and
efficient safe access
solutions**



Technology Description

- Decklite can be installed in a number of versatile configurations. The system provides personnel with a fully enclosed, soft fall, secure and safe work area.
- All steelwork components are made from high grade stainless steel to eliminate any risk association with the use of aluminium alloys and spark implications in hydrocarbon facilities.
- Certified to maximum live loads of up to 250 kg every square meter.
- Safe Working Loads are determined by way of Carbon Fibre Strut Placement. When Fit for Purpose, manual handling, risk and job safety requirements are reduced due to square meter maximum weight of 15kg.
- The system is installed and inspected daily by Decklite Certified Supervisors using Rope Access Methods (Level 3 IRATA). When the Decklite has been signed off Fit for Purpose it becomes part of the facility and can be accessed freely by non-rope access personnel to carry out Trade Work.

Technology Usage

Working platforms replacing normal scaffolding for risers, columns, jacket, structure etc inspection, blasting, painting and repairs.

Functionality/ Application Examples

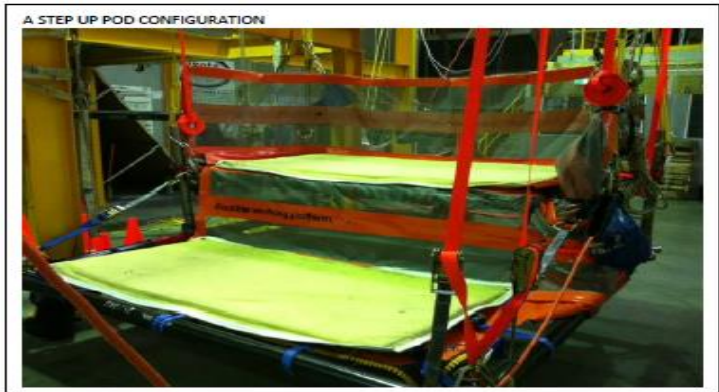
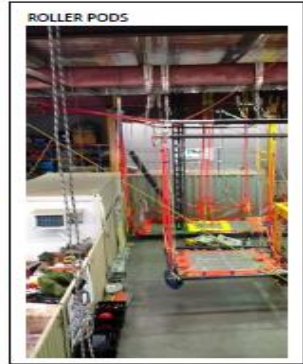
Decklite installed in many versatile configurations to suite the working locations;

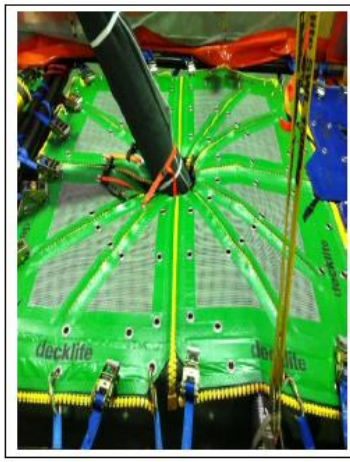
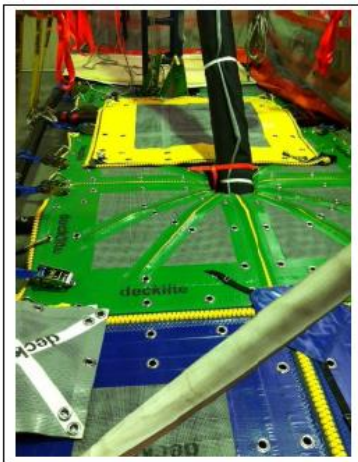
- a. Horizontal installation – e.g cable tray replacement
- b. Work basket use for underneath grate floor /platforms or for high pressure water blasting
- c. Rope access work deck (maneuver up or down 1m/mins) for e,g blasting and painting of risers
- d. Roller Pod for blasting painting at swan neck riser or pipeline bend area
- e. Multiple Decklite roller pods for handrail repairs
- f. Column kit for fully enclosed and safe access to the splash zone area (raise up and down)
- g. Cantilever for safe access over the side



THE DECKLITE WORK BASKET

The Decklite Work Basket is sturdy, strong and lightweight and will be lowered or raised quickly and safely to the required work zone.



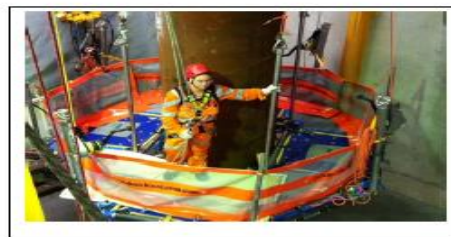


Typical Installation Steps

- a. Decklite is installed by a minimum Decklite Team of 4 x IRATA Rope Access Technicians who have completed Decklite's Course 2 or 3 extensive Training Course (DECK/HSE/TC-02 & DECK/HSE/TC-03). A minimum of two Level 3's are included in the Team.
- b. The Installation & Dismantling Process is performed using IRATA International Code of Practice Guidelines and Procedures. The Methodology of the Decklite Working Platform is performed as per the Decklite System Standards (DECK/SS/HSE-01 – HSE Guidelines & DECK/SS/H-01 – Handbook).
- c. When the Decklite Working Platform has been installed it is signed off fit for purpose by a Decklite Certified Supervisor Level 3 Technician (Certified Course 3) who has completed all the required tasks & checklists under the Decklite HSE Guidelines (DECK/HSE/03/14). This Supervisor remains with the Decklite and monitors whilst the required scope of work is being carried out. Daily inspections and checklists are carried out after each break prior to entry.
- d. When the Decklite has been signed off Fit for Purpose it becomes part of the facility and can be accessed freely by non-rope access personnel to carry out Trade work. These personnel complete an Onsite Safety Induction and Familiarization Course conducted by the Decklite Level 3 Supervisor prior to entering the Decklite Working Platform (DECK/HSE/TC-01).

- e. When the work is complete, the Declite Working Platform is dismantled and stored (or relocated to the next work zone) by the Declite Team of a minimum of 4 x IRATA Rope Access Technicians.

COLUMN KITS Installation around Columns, Risers, Jackets of any size



Limitations & Benefits

Benefit (qualitative)

- a. The Declite Working Platform is a lightweight modular system and therefore provides New Technology to obtain safe access and leads in Workplace Health & Safety.
- b. No components weighs more than 15kg and therefore eliminates manual handling, risk and job safety requirements.
- c. All Declite configurations have secondary support and numerous backup systems to provide a safe working environment for workers to carry out scopes when working at height (Ref: Handbook DECK/SS/H-01).
- d. When the Declite is installed fit for purpose it is a primary support system and all personnel are attached to a secondary support central safety line by way of a fall arrest harness (Working at Height). A Safety Fence is always secured around the entire perimeter of the Declite.
- e. All personnel who carry out trades on the Declite are supervised by a Declite Level 3 Supervisor in a 1 x Supervisor to 5 x personnel ratio.

Certification

- a. Decklite is Structurally Engineered and Certified for Safe Working Loads and Calculation Packages in accordance with the following Standards:
 - i. AS1170 – Loading Code: Parts 1&2
 - ii. BS5950 – Structural Use of Steelwork in Building
- b. Each Component has been tested to destruction by NATA Accredited Laboratories. The entire system is manufactured in Australia using the highest grade components with the latest technology.
- c. All Steelwork components are made from high grade stainless steel to eliminate any risk association with the use of aluminium alloys and spark implications in hydrocarbon facilities.
- d. Decklite is certified to maximum live loads of up to 250 kg every square meter. Safe Working Loads are determined by way of Carbon Fibre Strut Placement.



Contacts

Operator Contact Person on Technology

AMSERVE ENGINEERING SDN BHD
Lot 2242, Block 2, Jalan Firuz, Pujut 5 ½, MCLD
98000 Miri, Sarawak, Malaysia
P: +60 85-663 027 / +60 85-622 027
F: +60 85-659 027
E: info@amserve.com.my